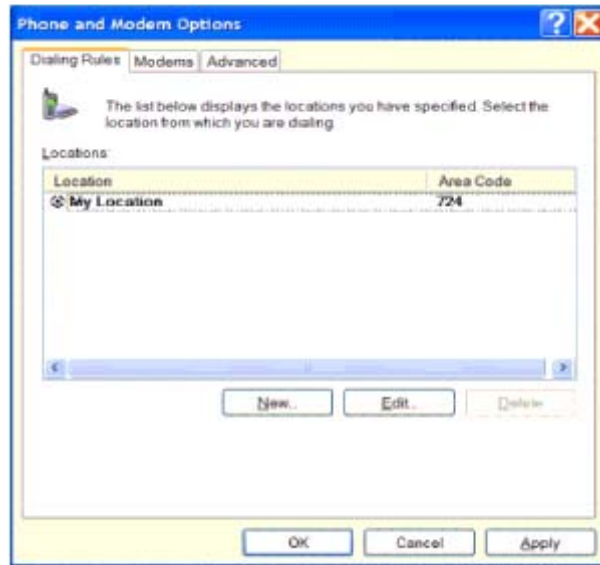


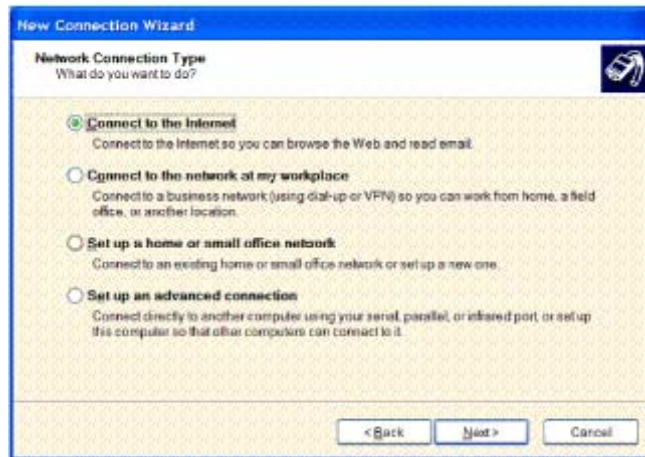
Set up a dial-up network in Windows XP

The first time you create a connection, you will be prompted for location information. It is important to specify the correct country and dialing information. The standards for telephone operation differ in various countries. Incorrect country selection may prevent the modem from functioning properly.



If you DO NOT come to the above screen automatically, then follow the directions below.

1. To get to the "New location" box, click on "START", then on "Control Panel", and double click on "Phone and Modem Options."
2. Under the "General" tab, in "Location Name," you can type in "Home."
3. Make sure that the country/region is set to "United States."
4. Put "724" in the area code. If you want to disable call waiting, check the box and enter *70 to the right of it.
5. Choose whether your phone line uses tone or pulse dialing. Click "OK."
6. After you have set the location, you can change and edit it with the "Phone & Modem Options" in the Control Panel. (**You would need to do this if you moved, or your area code changed, or you switch your type of dialing.) You can also create new locations (This is helpful if you have a mobile computer that you use in various locations).



7. The "New Connection Wizard" is used next. This wizard can be accessed from the "START" menu, "Connect To" -> "Show All Connections." Then, click "File" -> "New Connection."

8. Select the "Connect to the Internet" radio button as shown. Click "Next."

9. Choose "Set up my connection manually." Click "Next."

10. Select "Connect using a dial-up modem." Click "Next."

11. Type in an ISP name - the name is not important - it is used only to identify the connection. We prefer that you enter "HTC." Click "Next."

12. Enter the phone number you were given when you signed up. Remember to include the area code with the number. No spaces or dashes are needed. Click "Next."

13. Enter the user name and password you chose when you signed up. MAKE SURE YOU ENTER THIS IN LOWER CASE LETTERS. Leave all the boxes checked. Click "Next."



14. Finally, you can add a shortcut on the desktop if you check the box. If you don't, the connection can still be accessed from the "START" menu, with "Connect to." Click "Finish." You can use or edit the connection with the shortcut you created, or from the "START" -> "Connect to" menu.